

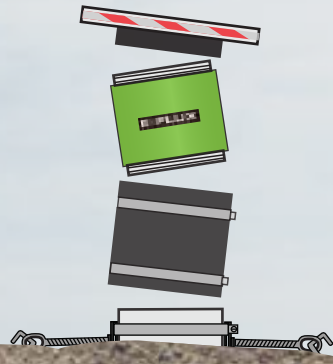
Deployment notes

- **Keep the traps upright.**
- **The travel blank should not be opened.**
- Turn off the irrigation system a week before deployment.
- Avoid saturated soils and/or standing water.
- Traps are moisture-resistant but not waterproof. Keep dry.
- Keep the traps capped unless deployed.
- The recommended deployment period is 14 days with a deployment range of 3-28 days.



Retrieval notes

- **If heavy rain is predicted, retrieve the traps before the rain event.**
- **Shipper is obligated to disclose if the traps have been in contact with contaminant before shipping back to E-Flux.**
- **Cap the traps with the originally provided solid caps.**
- Before capping the traps, remove insects and organic matter.
- Keep the traps upright.
- Fill in the retrieval information on the chain-of-custody form(s).
- Remove the travel blank from the ziplock bag and place it in the cooler before shipping the cooler back to E-Flux.
- The travel blank is never opened.
- Keep the field components for future rounds of testing.
- Do not use ice to preserve the traps.
- Expedited shipping is optional.
- Ship traps to:
E-Flux
200 W Lake Street, RIC 0922
Fort Collins, CO 80523-0922
(970) 335 8901



E-FLUX

Easy set-up. Expert results.

Deployment SOP

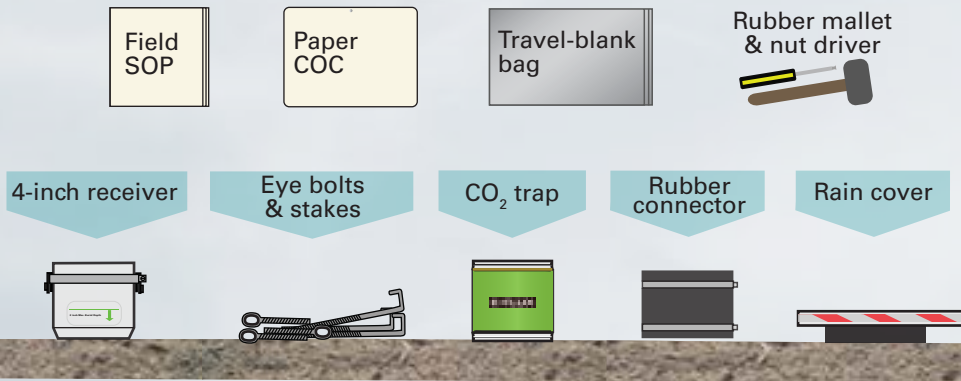
**Fossil Fuel Trap:
4-inch receiver with stabilizing tensors**

E-Flux, LLC
200 W Lake Street, RIC 0922
Fort Collins, CO 80523-0922

(970) 492-4360
info@soilgasflux.com

© 2019 All Rights Reserved.

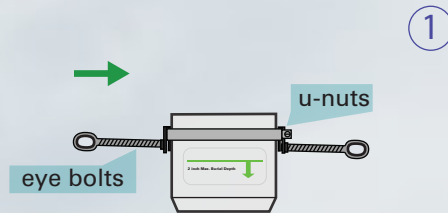
Provided equipment



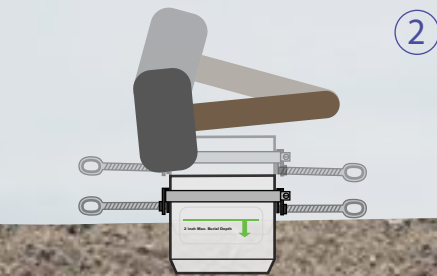
Receiver installation

Tighten the eye bolts through the u-nuts.

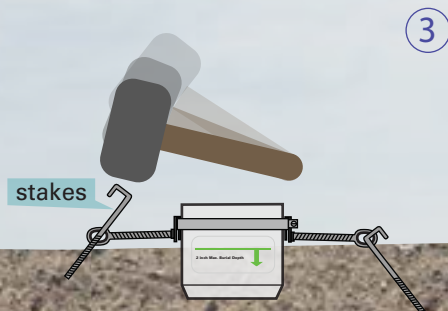
Place the beveled side of the 4-inch receiver vertically on the ground.



Using the rubber mallet, hammer the receiver two inches into the ground. Keep the receiver vertical. If the soil is too hard for the receiver to penetrate, use a knife to cut a ring in the soil.



Hammer the stakes through the eye screws on a 45° angle.



Trap deployment

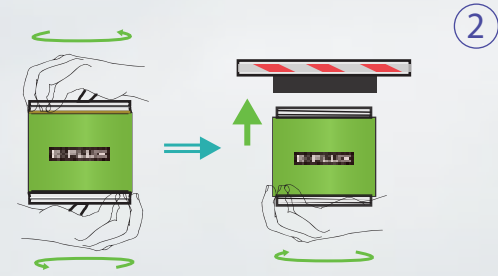
Place the travel blank in the provided ziplock bag.

Do not open the travel blank.



Remove the top and bottom caps from the trap.

Screw the rain cover on the top side of the trap.



Slide the trap into the rubber connector.



Slide the trap and rubber connector into the installed receiver pipe.

Tighten the top and bottom clamps of the connector with the nut driver.

